

REPAIR KIT, HOW TO RESTORE THE BARTUBELESS® SYSTEM

HOW TO RESTORE THE BARTUBELESS®
SYSTEM AFTER REPLACING A SPOKE
OR NIPPLE



REPAIR KIT

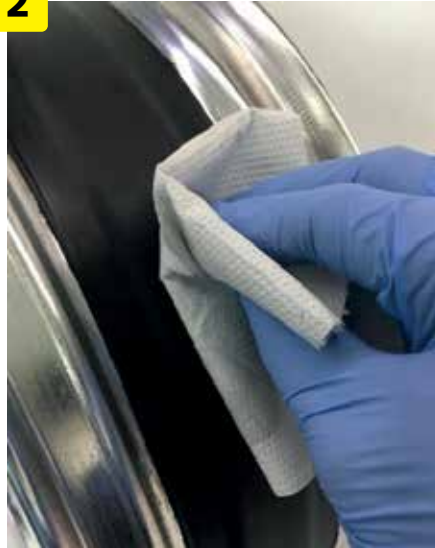
Procedure for restoring the Bartubeless® system after repairing a spoke or replacing a nipple. The procedure is simple and, if done correctly, guarantees pressure tightness. Follow the sequence shown:

1



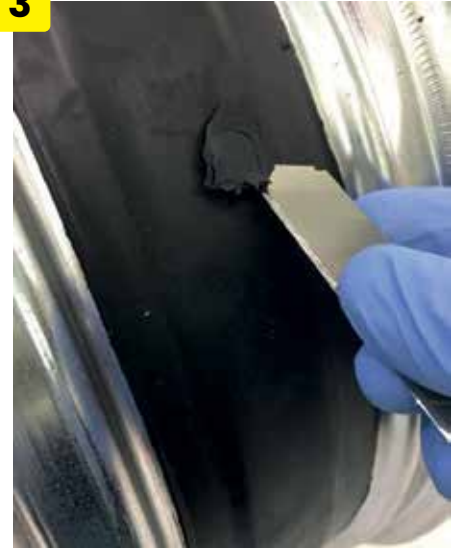
Put on the disposable gloves (included).

2



Carefully clean the surface to be treated with a common nitro paint diluent..

3



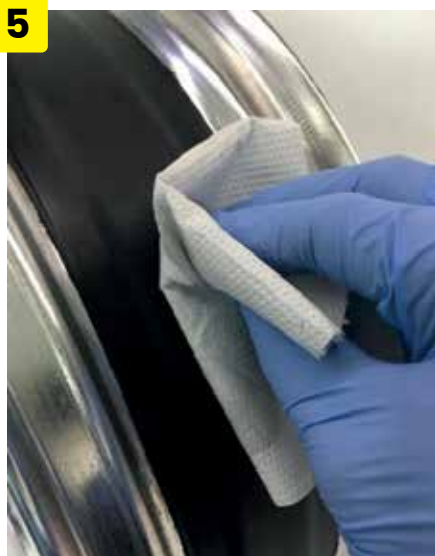
With the blade of a cutter, cut the polymer around the nipple until a dowel is obtained.

4



Remove the dowel until the nipple is exposed. Then replace the spoke or the nipple normally.

5



Carefully clean the surface to be treated with a common nitro paint diluent (like in step 2).

6



Apply an abundant amount of BARTubeless® polymer directly from the tube to the point to be repaired.



At this point you can proceed in two different ways, without using the patch or using the patch. The patch method allows the tire to be reassembled only after a few hours instead of 24/48 hours with the no-patch method.

NO PATCH METHOD

7A



With a cutter blade or a spatula, level the polymer by removing the excess material.

8A



Wait 24-48 hours for the complete polymerization of the product before reassemble the tire.

PATCH METHOD FOR FASTER REPAIR

7B



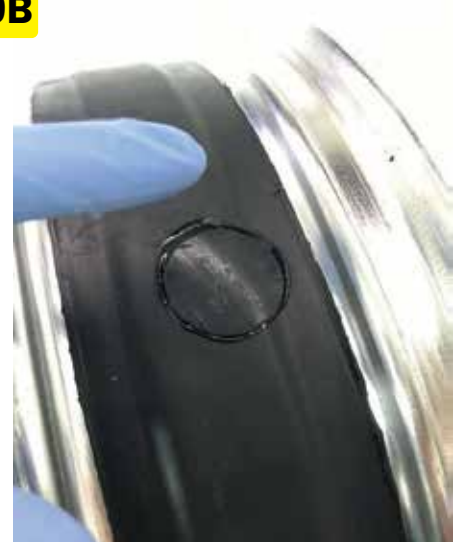
Apply the patch (included) directly on the fresh polymer before it hardens.

8B



Firmly press until the excess material is overflowed, then remove excess.

9B



Wait a few hours: when the patch is no longer moveable to the touch, you can reassemble the tire carefully.